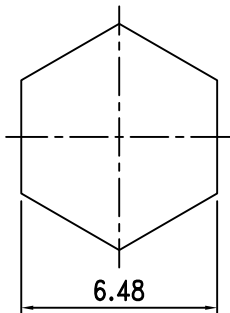
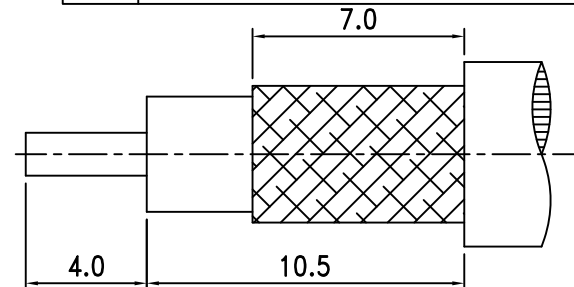


Electrical Characteristics	
Cable or Adaptor	LMR240
Impedance	50 Ω
Frequency Range	DC - 6 GHz
V.S.W.R.	≦ 1.30
Working Voltage	≦ 335 Vrms
Dielectric Withstanding Voltage	≦ 1000 Vrms

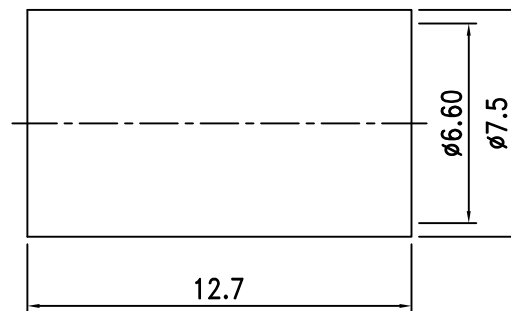
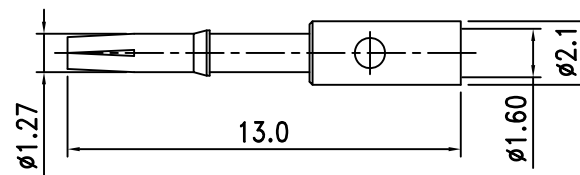
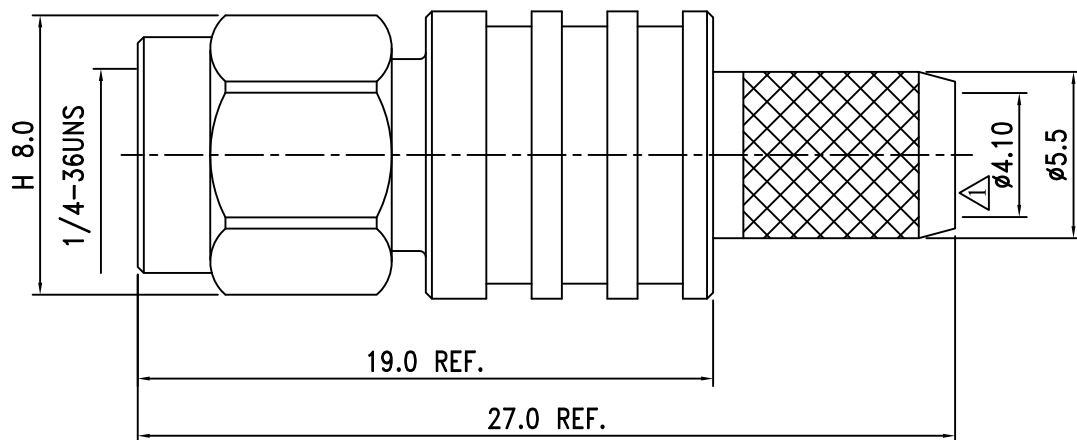


RECOMMENDED
CRIMPING TOOL SIZE

NO.	DESCRIPTION	DATE
△	ø4.00 → ø4.10	2020.03.10



RECOMMENDED
CABLE STRIPPING DIM'S



ROHS
COMPLIANT

8.	Ferrule	Brass	1	Gold
7.	Shell	Brass	1	Gold
6.	Gasket	Silicone	1	Red
5.	Retaining Ring	SUS304	1	None
4.	Barrel	Brass	1	Gold
3.	Insulation	PTFE	1	White
2.	Pin	Brass	1	Gold
1.	Body	Brass	1	Gold
NO.	DESCRIPTION	MATERIAL	Q' TY	FINISH

繪圖DRAWN	SCALE	UNITS	圖名 TITLE	SMA-02LM-S2-RP-TGG RP SMA Male For LMR240
Jenny	比例 4:1	單位 mm		
審核CHECKED	公差TOLERANCE		日期DATE	
Peter	.X	±0.2		
主管APPROVAL	.XX	±0.1		
	.XXX	±0.05		
Peter	ANGLE	±0.5°	A-1	C:/SHINING/SMA-PARTS/SMA-02LM-S2-RP.DWG



夏尼有限公司
SHINING PRECISION CO., LTD

圖名
TITLE

版次REV.

A-1

日期DATE

104.12.14