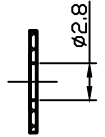
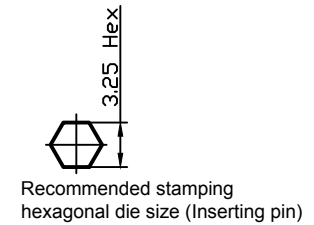
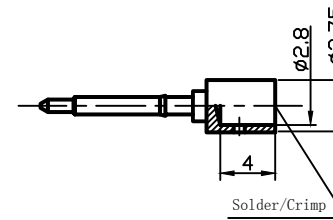
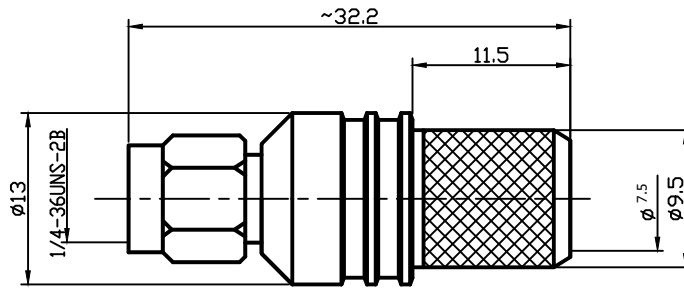


RevNo	Revision note	Date	Signature	Checked
V1.0	Sketch only	28/10/2024		

RoHS Compliant.

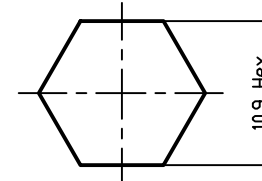
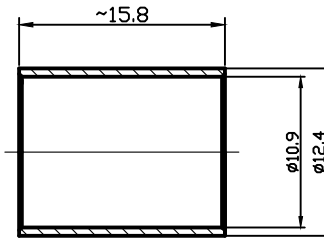


Interface Per: MIL-STD-348, IEC 60169-15

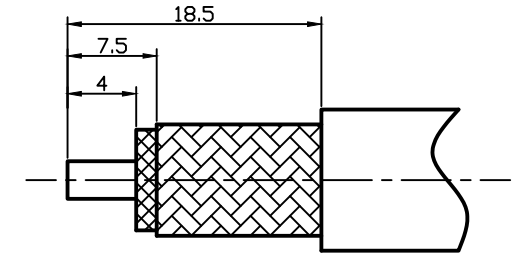
Cable Type: RG8

Material & Finishing:

1. Center conductor: Phosphor bronze, Gold Plating
2. Insulators: PTFE
3. Body : Brass, Gold Plating
4. Crimping Ferrule: Soft Copper, Nickel Plating



Recommended stamping hexagonal die size (cannula)



Suggested stripping

Electrical Data:

1. Impedance: 50 Ohms
2. Frequency: 0~6GHz
3. VSWR: ≤ 1.2 @ 900MHz,
 ≤ 1.25 @ 1800MHz,
 ≤ 1.35 @ 3000MHz,
 ≤ 1.6 @ 6000MHz
4. Insertion loss: ≤ 0.05 dB @ 900MHz,
 ≤ 0.05 dB @ 1800MHz,
 ≤ 0.05 dB @ 3000MHz,
 ≤ 0.1 dB @ 6000MHz,
5. Dielectric Withstanding voltage: 1000V Min
6. Voltage Rating : 500V Max

Package : 1 PC per bag

Laser Mark: LenoRF

Label Content:

LenoRF
 Part No: 3.01.332
 Part Name: SMA PLUG FOR RG8 CABLE
 QTY: 1 PC
 Date: WW/YY (Week/year)

Unless otherwise specified, tolerances as below: .x ±0.15 .xx ±0.1 .xxx ±0.05 Angle: ±2°	Material:	See Notes	Weight	g
	Finish:	See Notes	Scale	8:1
	Unit	mm	Page	01
	REV.	V1.0	p/n	01
Drawn	DATA:	Projection		
Checked	DATA:	Title:	SMA PLUG FOR RG8 CABLE	
Approved	DATA:			



DWG NO. 3.01.332

Cust P/N. TBD