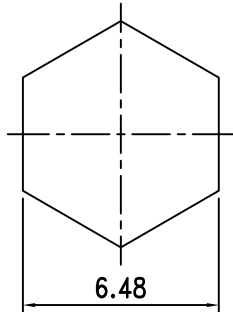
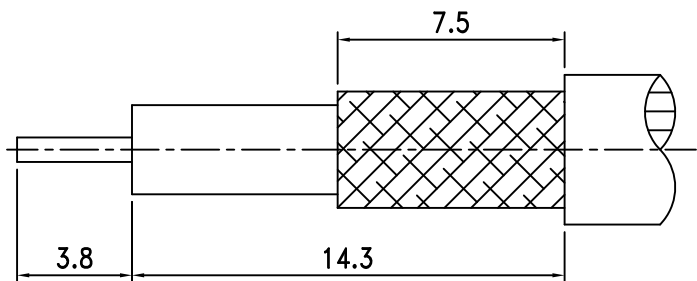
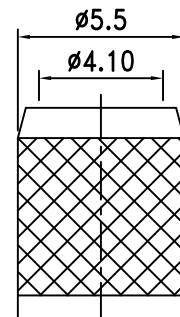
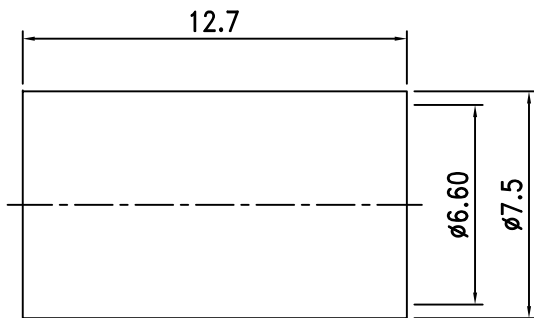


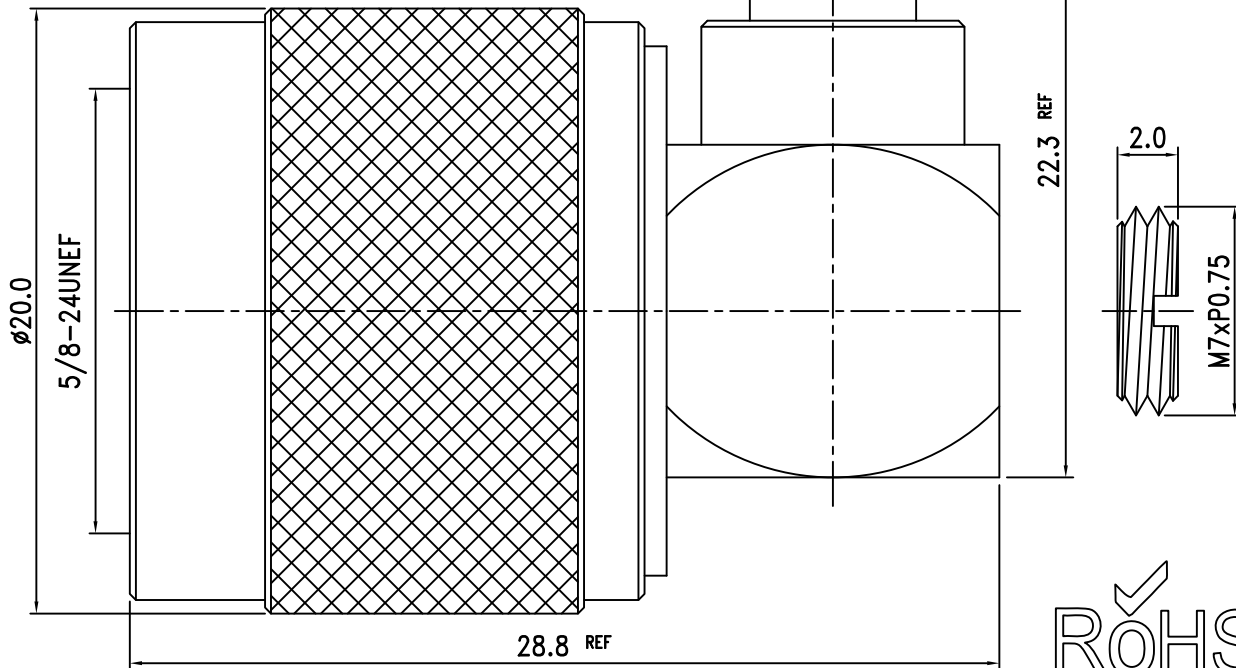
Electrical Characteristics	
Cable or Adaptor	LMR 240
Impedance	50 Ω
Frequency Range	DC - 6 GHz
V.S.W.R.	≦ 1.35
Working Voltage	≦ 1000 Vrms
Dielectric Withstanding Voltage	≦ 2500 Vrms



RECOMMENDED  
CRIMPING TOOL SIZE



RECOMMENDED  
CABLE STRIPPING DIM'S



ROHS  
COMPLIANT

10.	Ferrule	Brass	1	Nickel
9.	Nut	Brass	1	Nickel
8.	Shell	Brass	1	Nickel
7.	Gasket	Silicone	1	Red
6.	Retaining Ring	Brass	1	None
5.	Chassis	Brass	1	Nickel
4.	Barrel	Brass	1	Nickel
3.	Insulation	PTFE	1	White
2.	Pin	Brass	1	Gold
1.	Body	Brass	1	Nickel
NO.	DESCRIPTION	MATERIAL	Q' TY	FINISH

繪圖DRAWN	SCALE	UNITS	夏尼有限公司 SHINING PRECISION CO., LTD		
Kelly	比例 4:1	單位 mm			
審核CHECKED	公差TOLERANCE				
Peter	.X	±0.2	圖名	N-37LM-3-TGN	
主管APPROVAL	.XX	±0.1	TITLE	R/A N Male For LMR240	
	.XXX	±0.05	版次REV.	電腦圖檔CAD FILE	
Peter	ANGLE	±0.5°	A	C:/SHINING/N-PARTS/N-37LM(Z)-3.DWG	
				日期DATE	2020.01.10