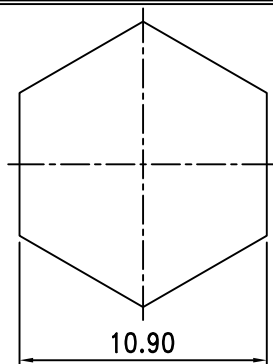
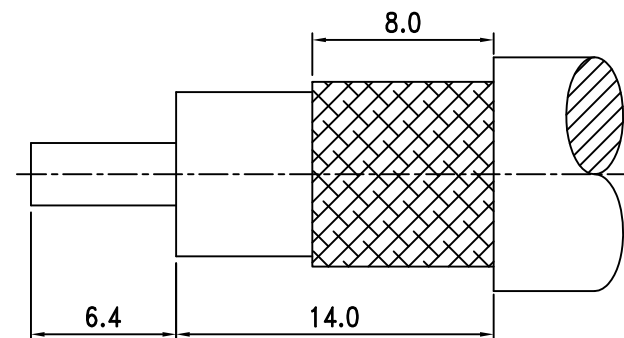


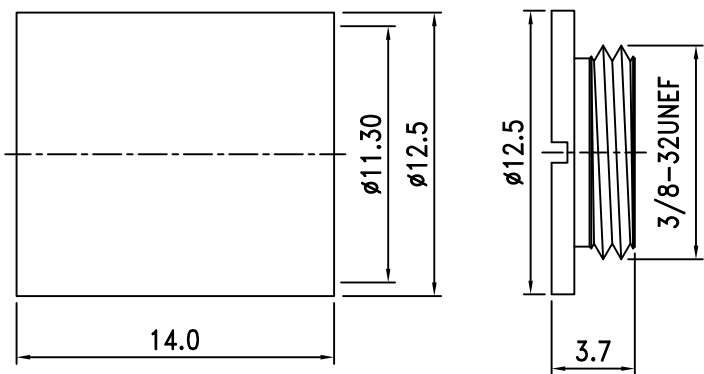
Electrical Characteristics	
Cable or Adaptor	LMR 400
Impedance	50 Ω
Frequency Range	DC - 6 GHz
V.S.W.R.	≦ 1.35
Working Voltage	≦ 1000 Vrms
Dielectric Withstanding Voltage	≦ 2500 Vrms



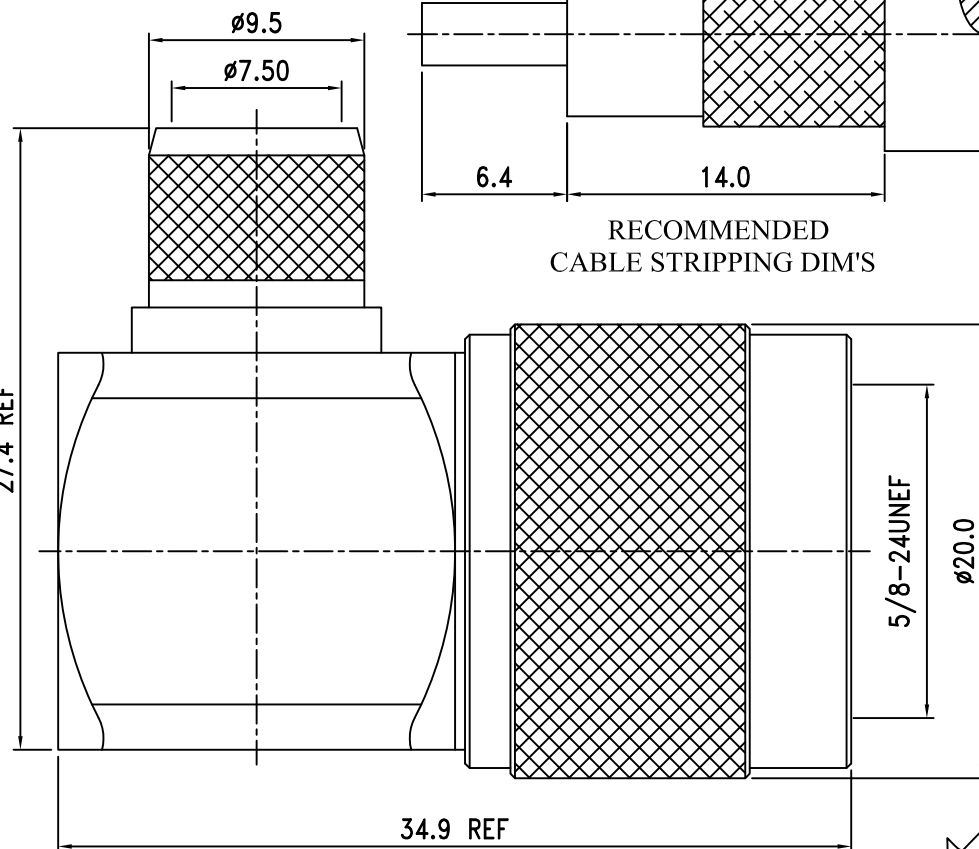
RECOMMENDED
CRIMPING TOOL SIZE



RECOMMENDED
CABLE STRIPPING DIM'S



27.4 REF



34.9 REF



10.	Nut	Brass	1	Nickel
9.	Ferrule	Brass	1	Nickel
8.	Shell	Brass	1	Nickel
7.	Gasket	Silicone	1	Red
6.	Retaining Ring	Brass	1	Nickel
5.	Chassis	Brass	1	Nickel
4.	Barrel	Brass	1	Nickel
3.	Insulation	PTFE	1	None
2.	Pin	Brass	1	Gold
1.	Body	Brass	1	Nickel
NO.	DESCRIPTION	MATERIAL	Q' TY	FINISH

繪圖DRAWN	SCALE	UNITS	夏尼有限公司 SHINING PRECISION CO., LTD	
Kelly	比例 3:1	單位 mm		
審核CHECKED	公差TOLERANCE			
Peter	.X	±0.2	圖名	N-37T-3-TGN
主管APPROVAL	.XX	±0.1	TITLE	R/A N Male For LMR-400
	.XXX	±0.05	版次REV.	電腦圖檔CAD FILE
Peter	ANGLE	±0.5°	A	日期DATE
			C:/SHINING/N-PARTS/N-37T-3.DWG	2024.09.06