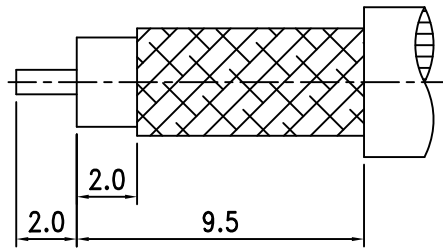
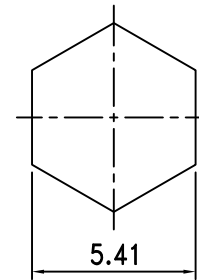


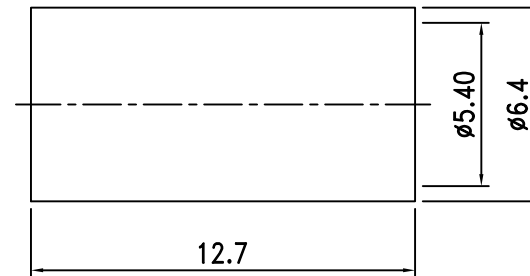
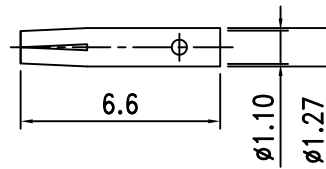
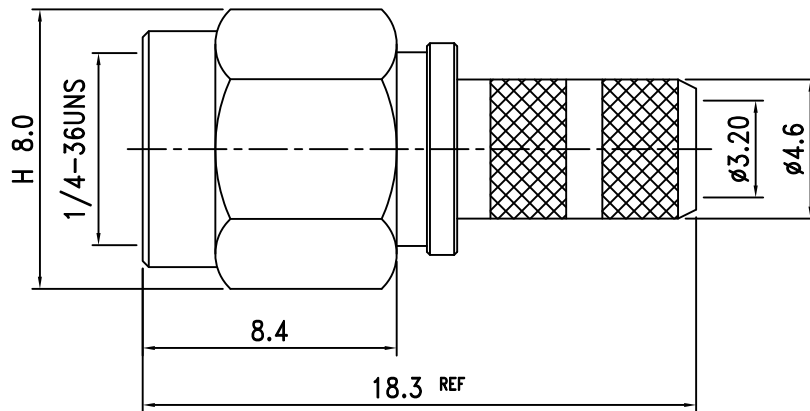
Electrical Characteristics	
Cable or Adaptor	RG58
Impedance	50 Ω
Frequency Range	DC - 6 GHz
V.S.W.R.	≤ 1.30
Working Voltage	≤ 335 Vrms
Dielectric Withstanding Voltage	≤ 1000 Vrms



RECOMMENDED
CABLE STRIPPING DIM'S



RECOMMENDED
CRIMPING TOOL SIZE



ROHS
COMPLIANT

7.	Ferrule	Brass	1	Gold
6.	Shell	Brass	1	Gold
5.	Gasket	Silicone	1	Red
4.	Retaining Ring	Beryllium	1	None
3.	Insulation	PTFE	1	White
2.	Pin	Brass	1	Gold
1.	Body	Brass	1	Gold
NO.	DESCRIPTION	MATERIAL	Q' TY	FINISH

繪圖DRAWN	SCALE	UNITS
Kelly	比例 4:1	單位 mm
審核CHECKED	公差TOLERANCE	
Peter	.X	±0.2
主管APPROVAL	.XX	±0.1
	.XXX	±0.05
Peter	ANGLE	±0.5°

	夏尼有限公司 SHINING PRECISION CO., LTD	
圖名 TITLE	SMA-02F-RP-TGG For Cable RG-58U	
版次REV.	電腦圖檔CAD FILE	日期DATE
A	C:/SHINING/SMA-FINISH/LUS/SMA-02F-RP.DWG	2023.03.08