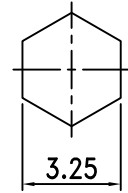
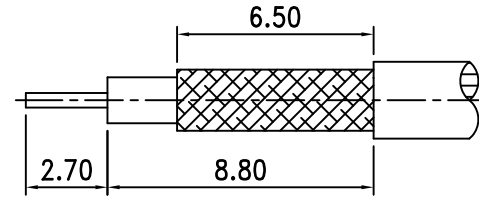
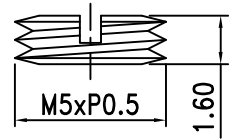
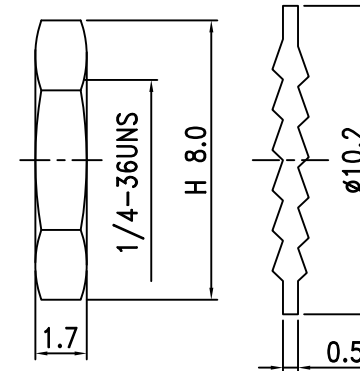
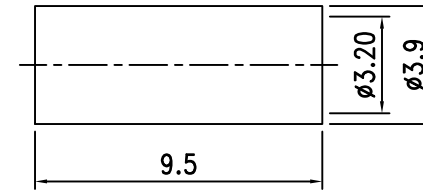
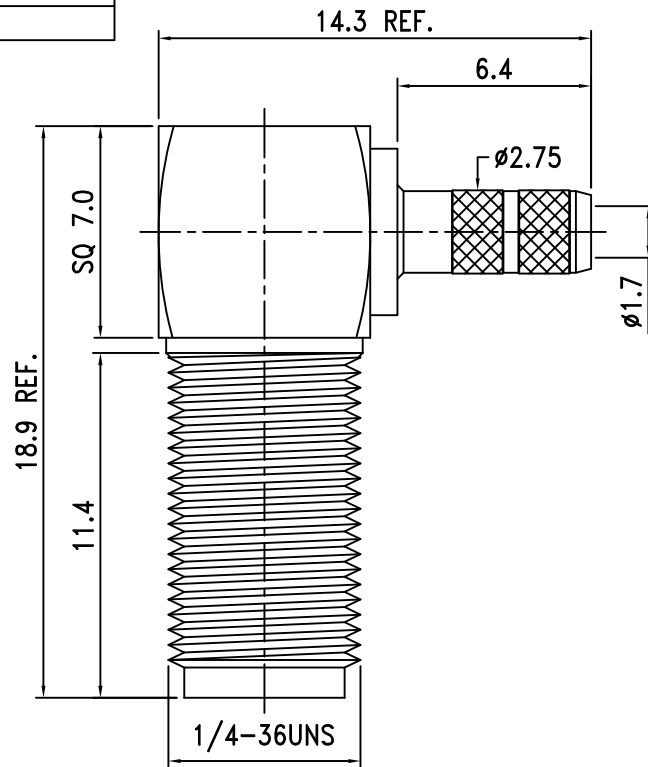
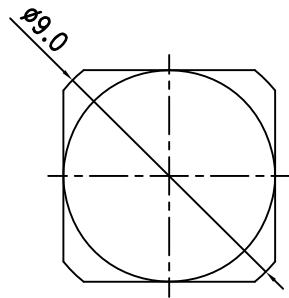


Electrical Characteristics	
Cable or Adaptor	RG-174U / RG-316U
Impedance	50 Ω
Frequency Range	DC - 6 GHz
V.S.W.R.	≦ 1.35
Working Voltage	≦ 335 Vrms
Dielectric Withstanding Voltage	≦ 1000 Vrms



RECOMMENDED
CABLE STRIPPING DIM'S

RECOMMENDED
CRIMPING TOOL SIZE



ROHS
COMPLIANT

8.	Screw	Brass	1	Gold
7.	Ferrule	Brass	1	Gold
6.	Washer	Brass	1	Gold
5.	Nut	Brass	1	Gold
4.	Insulation	PTFE	1	White
3.	Pin	Beryllium	1	Gold
2.	Body	Brass	1	Gold
1.	Body	Brass	1	Gold
NO.	DESCRIPTION	MATERIAL	Q' TY	FINISH

繪圖DRAWN	SCALE	UNITS	圖名	
Kelly	比例 4:1	單位 mm	夏尼有限公司	
審核CHECKED	公差TOLERANCE		SHINING PRECISION CO., LTD	
Peter	.X	±0.2	TITLE	SMA-32L-9-TGG For Cable RG-316
主管APPROVAL	.XX	±0.1	版次REV.	電腦圖檔CAD FILE
	.XXX	±0.05		日期DATE
Peter	ANGLE	±0.5°	A	C:/Shining/SMA-Finish/LUS/SMA-32L-9.DWG 2024.10.14