

Over View

WLINK WL-G920 4G+/4G/3G OpenWRT router is the internet of thing mobile cellular router and a machine to machine (M2M) industrial cellular router, which can works on 4G+/4G/3G cellular network to provide reliable, secure and high speed wireless connectivity for remote management, telemetry, condition monitoring, CCTV, ATMs, vending machine and other M2M/IoT applications. Using the Dual-core CPU basic frequency 880 MHZ, wireless support 802.11 n/ac, highest , Perfect compatible OpenWRT third parties firmware, meet customer secondary development.

WLINK WL-G920 4G+/4G/3G OpenWrt router is based on the OpenWRT trunk system, which is configured using a web interface (LuCI). Customers can be allowed to customize WL-G920 series router to fit any application from the selection and configuration by WLINK provided.



Industrial Grade

OpenWRT OS

Daul-core CPU

Gigabit Ethernet

2.4G&5G Wi-Fi

4G MIMO

Power Anti-reverse

Basic Features

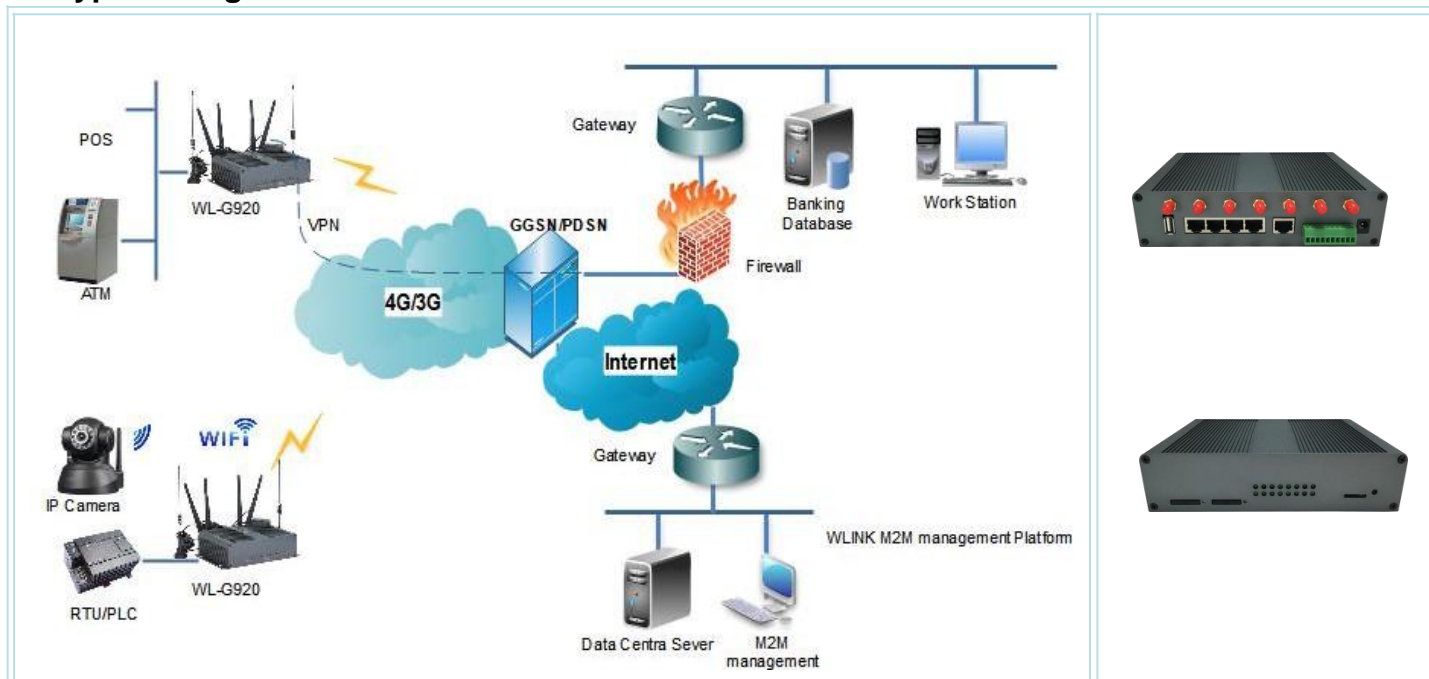
- ◎ Industrial robust design and compact metal housing, heat endurance and radiation ability
- ◎ High data speed via 4G+/4G/3G network
- ◎ Strong electromagnetic interference Resistance
- ◎ Support DIN-Rail Mounting for industrial
- ◎ Built-in watch dog, Multi-link detection
- ◎ Dual-band 802.11n/ac Wi-Fi support, 1.3Gbps data rate
- ◎ 2x Digital Input(DI), 1x Digital Output (DO), suit for I/O communication
- ◎ MIMO antenna for 4G+/4G

- ◎ MIPS Dual-core 880MHz CPU.
- ◎ Standard equipped with Dual SIM Single Module for Failover or Backup between two network
- ◎ Always online, reboot automatically if disconnected to ensure continual connection
- ◎ SPI Nor Flash - 16MB
- ◎ Supports extra USB/TF card storage
- ◎ Shock and vibration resistant

Typical Application

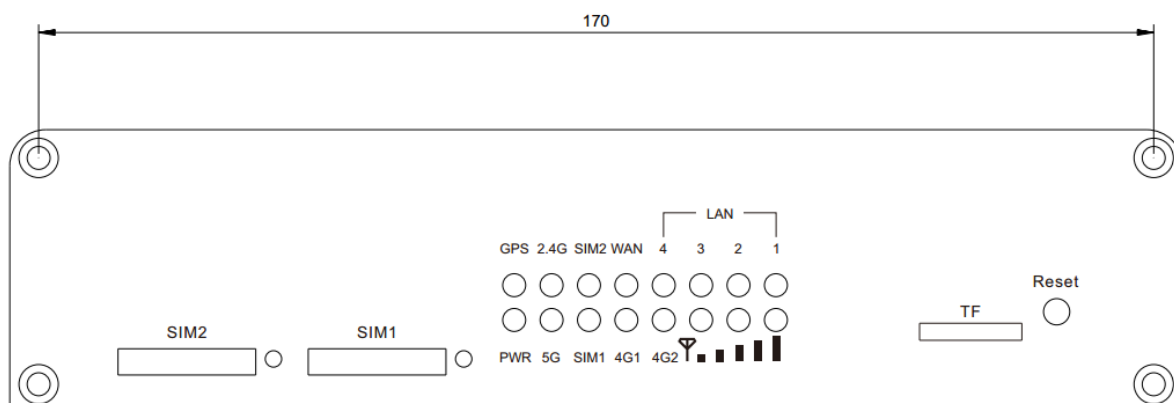
Energy	Digital Oil Field, Coal Mine, Solar, Smart Grid,
Utilities	Smart City, Traffic, Street lighting, Public Safety & Security, 4G Public hot spot, Environment monitoring, Video Surveillance
Industrial	Remote Telemetry, Tanking Monitoring, Automation, Remote PLC, Remote AMR, Remote Monitoring and control
Retail	ATM, POS(Point-of-Sale), Vending Machine, Lottery Machine, Branch network, Digital Signage, Video Surveillance, failover between WAN&4G/3G
Transportation	Bus Wi-Fi, Wi-Fi on Board, Vehicle video surveillance, Fleet tracking and management, Bus Advertising

Typical Diagram

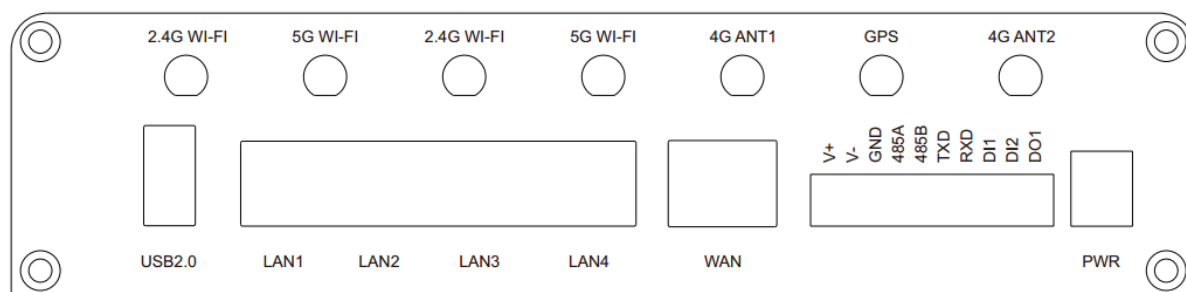


G920 Interface

Front Panel



Back Panel:



Specification

Optional Supports Mobile Network	<ul style="list-style-type: none"> ◎ LTE-A/LTE ◎ DC-HSPA+/HSPA+/HSPA/WCDMA/UMTS 	Ethernet Standard	<ul style="list-style-type: none"> ◎ IEEE 802.3 ◎ IEEE 802.3u ◎ IEEE802.3ab
Interface	<ul style="list-style-type: none"> ◎ 5 x Gigabit Ethernet ◎ 1 x RS-232 ◎ 1 x RS485 ◎ 3 x Digital I/O(input/output) ◎ 3 x SMA-K antenna interface ◎ 4 x SMA-J antenna interface ◎ 2 x Standard SIM/R-UIM interface ◎ 1 x TF interface ◎ 1 x Expansion USB 2.0 ◎ 1 x DC Terminal block Power connector 	LED instruction	<ul style="list-style-type: none"> ◎ PWR ◎ WLAN(2.4G, 5G) ◎ GPS ◎ 4G(4G1,4G2) ◎ Signal ◎ LAN (LAN1~LAN4) ◎ WAN
Power Consumption	Power Communications: Operate 500mA@+12VDC, Idle: 240mA@+12VDC	Power supply	◎ 7.5~32VDC
Wi-Fi	<ul style="list-style-type: none"> ◎ Standard: IEEE 802.11N/802.11AC ◎ WEP, WPA and WPA2 encryption ◎ Standard 1.3Gbps ◎ AP, Client, station, bridge mode support 	Other	<ul style="list-style-type: none"> ◎ Dimension: 179mm x 124mm x 43mm (not including antenna) ◎ Weight: 600g ◎ Operation temperature: -30~+70℃ ◎ Store temperature: -40~+85℃ ◎ Related humidity: <95% (non-condensing) ◎ Guarantee: one year